

The NorthState Public Employee

Affiliated with Public Employees Union, Local 1
Serving BCEA Members in Butte County

LOCAL 1

Volume 19, Issue 5

May 2008

Do I have to sign?

by Rudy Jenkins

The Union often gets this question in regards to someone who is getting an evaluation they don't agree with. The answer is simple, no you are not required to sign the evaluation. In such cases where the employee does not sign the evaluation, the supervisor will simply write in the space refused to sign. Signing an evaluation does not mean that you agree or disagree with the contents, it simply means that you have received a copy. You can write on the evaluation that you are signing the document stating that you received a copy and you do not agree with this issue than refusing to sign.

Remember, your supervisor is required to review your evaluation in detail with you prior to you signing it so that you understand the reasons for the marks you received. Our MOU states that "No

evaluation of any employee shall be placed in his/her personnel file without providing the employee an opportunity for discussion between the employee and an evaluator." At this time, you should challenge any less than stellar marks with your supervisor. Remember you have the right under our MOU to write a rebuttal to the evaluation and have it attached to it when it is placed in your personnel file. If you should have any specific questions regarding your evaluation, please do not hesitate to contact the Union.

Computer Policy Update

by Rudy Jenkins

On Thursday, April 17th, your negotiations team spent three hours with County negotiators reviewing the proposed, newly, revised computer policy. While the new policy has been shortened by some ten pages, it is still full of redundancy; however, it is now readable and somewhat understandable. Unfortunately after three hours, we were only able to go through about 60% to 70% of the policy with the County. BCEA will be scheduling another date soon to meet with the County to hopefully finalize the meet and confer process on this policy. After the policy has been negotiated by all bargaining units, there will be formalized training for everyone to help them understand the new policy.

Welcome Larry Edginton as General Manager

by Anna Anderson, S/YCEA Office Manager



Please welcome Larry Edginton as the new General Manager for Local #1. Larry was employed by U.P.E., Local #1 in Sacra-

mento since November 27, 2006 as a Senior Business Agent serving the Sacramento County Superior Court, Probation Department and District Attorney's Office.

Prior to joining Local #1, Larry worked with Operating Engineers Local 3 in Alameda as a Director, Research Department and Craft & Maintenance Division. Larry has more than 30 years of experience in the labor movement from a shop steward to a department head for a major International Union.

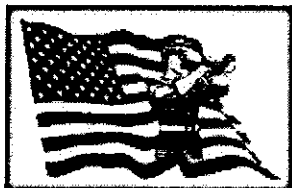
Larry Edginton's experience includes the nuts and bolts of basic membership representation, contract administration, arbitration and negotiations. He also had administrative responsibilities which included strategic planning, program management, training and development, legislative and regulatory analysis and personnel administration.

Larry received a BA in Behavioral Science in 1978 at the San Jose University.

WELCOME cont'd on page 3

INSIDE THIS ISSUE:

BCEA Directory	2
New Members	2
Catastrophic Leave	2
About Unions	3
Views from your President	3
BCEA New/Events	4
BCEA Calendar	4



Remember our Veterans
May 26, Memorial Day

BCEA DIRECTORY

2210 5th Avenue
Oroville, CA 95965

Phone: (530) 533-8003 or (800) 991-2232

Fax: (530) 533-7983

E-mail: bcea-gcea@onemain.com

Website: www.bcealocal1.org

8:00 a.m. - 1:00 p.m. & 1:30 p.m.- 4:30 p.m.

Staff

Executive Director	Rudy Jenkins
Office Manager	Eloise Herman

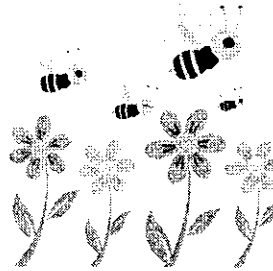
BCEA Officers and Directors

Jennifer Honea, President	538-7434
Tiffany Gerbing, Vice President	538-6466
Jim Pulling, Secretary	538-6608
Fran Harding, Treasurer	538-7414
Gary Jenkins, Sergeant-at-Arms	538-7606
Michael Lucas, Director	538-7407
Leslie Roberts, Director	538-7282
Pat Stevens, Director	538-6222
Thil Wilcox, Director	538-7791

BCEA Stewards

Jim Pulling, Chief Shop Steward	538-6608
Doug Arnold, Public Works	538-7266
Carrie Erickson, Chico Public Hlth	879-7408
Stephanie Eveatt, Child Sup. Ser.	538-4317
Christine Foreman, Chico DESS	879-3479
Gregory 'Randy' Frieze, Probation	538-7265
Tiffany Gerbing, Public Hlth.	538-6466
Gerry Grandstaff, Chico Assessor	891-2934
Bill Grogan, Facilities Ser.	538-7408
Fran Harding, Child Sup. Ser.	538-7129
Rick Haynes, Behavioral Hlth.	538-7950
Jennifer Honea, Sheriff	538-7434
Gary Jenkins, Public Works	538-7606
Jesse Magana, Chico Public Works	891-2769
Brent McGuire, Chico Beh. Hlth.	891-2997
Michael Lucas, Facilities	538-7407
Les Rodrigues, Behavioral Hlth.	538-2158
Patricia Sanchez, Public Hlth.	532-5696
Pat Stevens, Public Hlth.	538-6222
Tracy Snyder, Public Hlth.	532-5696
Mark Wietersen, Neal Rd. Landfill	345-2326
Thil Wilcox, Child Sup. Ser.	538-7791

Welcome New BCEA Members



<i>Samantha LaViolette</i>	<i>Sheriff</i>
<i>Patricia Noel</i>	<i>Child Support Svcs.</i>
<i>Melissa Ramos</i>	<i>Library</i>
<i>Veronica Velazquez</i>	<i>Public Health</i>
<i>Lea Wenger</i>	<i>Library</i>
<i>Yeng Yang</i>	<i>Child Support Svcs.</i>

Complementary Notary Services provided by Eloise between the hours of 8:00 a.m. - 4:00 p.m. Monday through Friday. Please call for an appointment at 533-8003.

BCEA Members in Need of Catastrophic Leave Donations at this time:

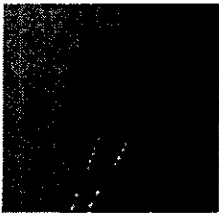
Name	Department
Raeshell Forrester	Auditor-Controller
Keith Holmes	DESS
Rosemary Mueck	Administration
Maria Sorenson	Child Support Svcs.
Cynthia Wilde	Clerk-Recorder

To donate vacation or compensatory time, complete the Catastrophic Leave Donation forms available from the BCEA office, our Directors, Stewards, Site Reps or website.

www.bcealocal1.org

About Unions

by Carole Kloss



This is the first of articles I will be writing to give some history to the labor movement and what sacrifices were made. Many of us take for granted our working conditions and complain about many of them which is your right to do. Your union representatives work every day to keep these conditions fair. Except for the two actual union staff employees in the BCEA office, all the rest of your representatives, board members, committee members and stewards are volunteers. They receive no compensation except for the satisfaction that they are doing their best to ensure that their fellow employees are in a safe, secure and fair work environment. They need your support, please become involved in strengthening your union. Each of my subjects can be Googled and I will only be writing a condensed version. Please go and read the whole story, you will then know what the sacrifices they made for us.

My first subject is Fannie Sellins. She was a labor organizer but she paid with her life. After becoming widowed and taking a job in a garment shop to support herself and four children, she became involved with the union movement. She first organized the United Garment Workers of America. Because of her outstanding abilities, she became an organizer for the United Mine Workers of America. Due to her efforts, thousands of miners in Pennsylvania were organized. The workers called her an Angel of Mercy because when the miners were striking, she went into their homes helping families care for children and taking care of sick. In 1919, she was murdered and the stories varied as to the true circumstances. One story is that she was on picket duty, one is that she was inciting a riot. A fellow union member said a dozen drunken deputy sheriffs on strike duty, led by a mine official, rushed the picketers and were clubbing and shooting. She was pulling some children out of danger and trying to get the deputies to stop clubbing the fallen picketer and not kill him, but he did die on the ground from his injuries.

Ten deputies were charged but no one was ever convicted. There were claims that witnesses were hidden away, imprisoned or intimidated. An inquest decided that the deputies' actions were justified because Mrs. Sellins, who was accompanied by women and children, went outside the home of the family she was visiting and tried to stop a fight between steelworkers and the deputies. The case came to trial four years later and was thrown out.

There is a monument in her memory at her grave in Union Cemetery at Arnold, Pennsylvania. There are many details to this story, that I just do not have room to cover here, as will be the case with more of the subjects I will be covering. Please take time to look them up and read about them.

I know that I did not face conditions such as these in my time with the union, but I saw each meeting as stepping into the battlefield and fighting for my fellow brothers and sisters in the union. If you do not feel as though you can be a site representative, steward or on the board, come to the meetings, find out what your union is doing for you, maybe sit on a committee, that does not take much of your time. The strength of the union is up to you. Become involved.

Views from your President

by BCEA President Jennifer Honea



Well, it's almost election time again. This year three of Butte County Board of Supervisor positions will be on the June ballot. District 1 Supervisor Bill Connelly and District 5 Supervisor Kim Yamaguchi will be seeking another term. So needless to say this election will bring at least one new face to the Butte County Board of Supervisors.

There are two candidates running for District 1, three candidates running for District 5. Constituents who live in the district seeking election will only be allowed to vote for that district candidate. So make sure to review all available candidate information and let your voice be heard. Don't forget to vote.

Important Election Dates:

Tuesday, June 3, 2008

Tuesday, November 4, 2008

WELCOME cont'd from page 1

Larry was also appointed by the U.S. Secretary of Labor to two terms on the OSHA Advisory Committee for Construction Safety and Health.

Congratulations on your new positions as General Manager for P.E.U., Local #!

Get Ready To Receive

New Membership Cards

Public Employees Union, Local One is turning to a laminated plastic identification card for member service enhancement. Members will be able to fill-out surveys, vote, and other related activities via the Union's website down the road. For now, these cards do not have these features but BCEA will be distributing the cards to its members sometime in the middle of May.

BCEA Political Action Committee

Get Out and Vote—yes!

Each year, the BCEA Political Action Committee conducts a Candidate's Night to find out more about our candidates. We want to know whether future candidates will work with the union to treat the county employees fairly when working on such issues as negotiations. This year the committee interviewed eight candidates for Board of Supervisors District 1, District 4, and District 5 on April 16 and April 17. The committee reviewed all of the answers provided by the candidates and made the following recommendations for endorsement: Bill Connelly, District 1; Kim Yamaguchi, District 5; and Steve Lambert for the open seat in District 4.

BCEA Event

Results of the Negotiation Survey

Mark your calendars for the annual BCEA Bargaining Advisory Committee meeting. On Thursday, May 8 beginning at 5:30 p.m., come join us for pizza and review the negotiation survey results and discuss potential negotiation proposals. If you are interested in the negotiation survey results, please come to the meeting as we don't publicize our results for management to see.

BCEA New Event

Hot Dog Days

A new BCEA member appreciation event is coming in May. We want to show our appreciation for our hard working members by offering a hot dog lunch on Wednesday, May 21 from 11:00 a.m. to 2:00 p.m. on the greens by the upper parking lot located across from 25 County Center Drive in Oroville. We will set up outside and offer members a hot dog, a drink, and a bag of chips for free.

Amusement Park Tickets for Sale

TICKETS	Member Prices	General Admission
---------	---------------	-------------------

Tickets available through BCEA office :

<i>Discovery Kingdom</i>	\$ 27.00	\$ 49.99
<i>Great America 7 & up</i>	\$ 34.00	\$ 51.99


Tickets available through www.peu1.org :

(Tickets purchased through PEU website will be mailed out from Martinez, CA. Allow 2 weeks to purchase.)

<i>Disneyland</i>		
<i>2 day, 10-up</i>	\$127.00	\$132.00
<i>2 day, 3-9</i>	\$108.00	\$112.00
<i>Legoland</i>	\$ 43.00	\$ 59.00
<i>Universal Studios</i>	\$ 51.00	\$ 64.00

Sorry, we cannot accept checks.





The Oroville Piecemakers Quilt Guild Presents



The 2008 Quilt Show

May 10 & 11th
10:00 am to 4:00 pm

1200 Myers Street, Oroville Municipal Auditorium

sun	mon	tue	wed	thr	fri	sat
may 2008				1	2	3
4	5  Cinco de Mayo	6	7	8 BCEA Bargaining Advisory Mtg 5:30 PM Oroville	9	10 Quilt Show Oroville
11 Mother's Day 	12	13	14	15	16	17
18	19	20 PEU Local 1 BOD Mtg 7:30 PM Martinez	21  Hot Dog Day 11 AM - 2 PM Oroville	22	23	24
25	26  Memorial Day	27 BCEA Local 1 BOD Mtg 5:30 PM Chico	28	29	30	31